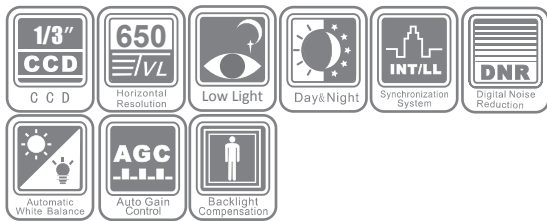
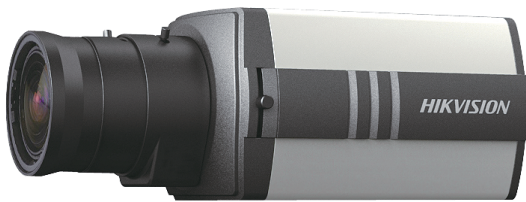


DS-2CC1192P(N)(-A) Low Light Box Camera



Key Features

- 1/3" Sony EXVIEW HAD CCD II
- 650 TVL high resolution
- Super low illumination
- Digital wide dynamic range
- Digital noise reduction
- Day / night auto switch

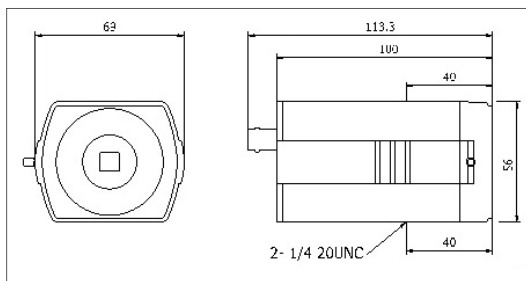
Specifications

DS-2CC1192P(N)(-A)	
Camera	
Image sensor	1/3" Sony EXVIEW HAD CCD II
Signal system	PAL / NTSC
Effective pixels	PAL: 976 (H) × 582 (V) NTSC: 976 (H) × 494 (V)
Min. illumination	0.001 lux@F1.2, AGC on
Shutter time	PAL: 1/50s ~ 1/100,000s NTSC: 1/60s ~ 1/100,000s
Lens mount	C/CS mount
Auto iris	DC/Video drive
Day & night	Electronic
Horizontal resolution	650 TVL
Synchronization	Internal synchronization (-A series support Internal / Power synchronization)
Video output	1Vp-p composite output (75 Ω / BNC)
S/N ratio	More than 62dB
General	
Operating conditions	-10°C ~ 60°C (14°F ~ 140°F) Humidity 90% or less (non-condensing)
Power supply	12 VDC ± 10% (-A series support 24 VAC ± 10%, 12 VDC ± 10%)
Power consumption	2W max. (-A series support 3W max.)
Dimensions	69 x 56 x 113.3 mm (2.72" × 2.20" × 4.46")
Weight	400g (0.88 lbs)

Available models

DS-2CC1192P, DS-2CC1192N, DS-2CC1192P-A, DS-2CC1192N-A

Dimensions



Accessories

